

quadri: AE4MI80AH/B

cool: 8 kW - heat: 9,4 kW



dual/trial: AE3MI56AH

cool: 5,6 kW - heat: 7,3 kW

trial: AE3MI68AH/B

cool: 6,8 kW - heat: 8,6 kW



- Cooling only and heat pump Multisplit systems, the ideal solution to provide comfortable conditions to 2, 3 or 4 rooms from one only outdoor unit
- 3 capacities: from 5,6 to 9,4 kW
- DC Inverter technology - R410A
- A class: all Multisplits are rated in the best Energy Efficiency Class thanks to:
  - last generation Twin rotary compressor: perfectly balanced dual rotors revolve smoothly and efficiently to provide powerful and vibration-free performance
  - power consumption during operation is reduced to minimum and consequently also full life cycle costs
- Fast and precise temperature control thanks to the Advanced Digital Hybrid (ADH) technology: the DC compressor operates at maximum power to provide almost instant heating or cooling and when desired temperature is reached a special Pulse Width Module automatically adjusts the compressor frequency so that to meet the room cooling or heating requirements.
- Maximum flexibility for installation: up to 70 m of pipe length
- Heating no-stop system: avoid heating stop due to defrosting cycles
- Fully mixed matching possibility of the indoor units (high-wall, cassette, ducted, floor and floor/ceiling)
- Each indoor unit is managed by its own full function remote control, with temperature sensor inside, 1h and 24h timers, operation mode selection, fan speed control, temperature setting
- "LED clean" feature, LED photocatalytic sterilization against odours, germs and bacteria (flat wall indoor units)
- In case more indoor units are installed in the same room, it is possible to address each remote control to its own indoor unit only, so that to avoid any interference
- Auto restart after a power supply black out
- It works with at least two indoor units connected
- Single-phase power supply 230/1/50
- Electronic protection against over-pressures

| PRODUCT NAME                                     |           | AE3MI56AH                 |               | AE3MI68AH/B               |               | AE4MI80AH/B                 |               |
|--|-----------|---------------------------|---------------|---------------------------|---------------|-----------------------------|---------------|
| Outdoor unit                                     |           |                           |               |                           |               |                             |               |
| Features   | Units     | Cooling                   | Heating       | Cooling                   | Heating       | Cooling                     | Heating       |
| No. of Indoor units operating simultaneously     | n°        | 3                         |               | 3                         |               | 4                           |               |
| Minimum no. of connectable indoor units          | n°        | 2                         |               | 2                         |               | 2                           |               |
| Cooling/Heating capacity - nominal (min-max)     | kW        | 5,2 (2,9-6,5)             | 6,8 (3,4-7,8) | 6,8 (2,9-8,1)             | 8,6 (3,4-9,0) | 8,0 (2,9-9,2)               | 9,4 (3,4-9,8) |
| Energy label class                               | ABCDEFG   | A                         |               | A                         |               | A                           |               |
| E.E.R. / C.O.P.                                  | [kW/kW]   | 3,40                      | 4,22          | 3,40                      | 4,30          | 4,64                        | 4,61          |
| Air flowrate Outdoor (h.-m.-l.)                  | m³/h      | 2900-1780-1310            |               | 2900-1780-1310            |               | 3070-1850-1400              |               |
| Fan speeds Outdoor                               | n°        | Auto                      |               | Auto                      |               | Auto                        |               |
| Sound pressure Outdoor (h.) at 4 m distance      | dB(A)     | 47                        | 48            | 50                        | 52            | 53                          | 54            |
| Power supply                                     | V/Ph/Hz   | 230/1/50                  |               | 230/1/50                  |               | 230/1/50                    |               |
| Running consumption                              | kW        | 1,530                     | 1,610         | 2,0                       | 2,0           | 1,725                       | 2,040         |
| Running current                                  | A         | 6,88                      | 7,70          | 8,87                      | 8,87          | 7,58                        | 8,96          |
| Annual energy cons.-cooling(500h)-Dir.2002/31/CE | kWh       | 765                       | -             | 1.000                     | -             | 862,5                       | -             |
| Compressor type                                  |           | Twin Rotary (DC inverter) |               | Twin Rotary (DC inverter) |               | Twin Rotary (DC inverter)   |               |
| Refrigerant type                                 |           | R410A                     |               | R410A                     |               | R410A                       |               |
| Liquid pipe diameter                             | mm(inch") | 6,35(1/4") x 3 (2)        |               | 6,35(1/4") x 3            |               | 6,35(1/4") x 4              |               |
| Gas pipe diameter                                | mm(inch") | 9,52(3/8") x 3 (2)        |               | 9,52(3/8") x 3            |               | 9,52(3/8")x3 - 12,7(1/2")x1 |               |
| Max. pipe lenght (per indoor unit)               | m         | 25                        |               | 25                        |               | 30                          |               |
| Total max. pipe lenght (per indoor unit)         | m         | 45                        |               | 60                        |               | 70                          |               |
| Total pipe lenght with standard charge           | m         | 45                        |               | 45                        |               | 45                          |               |
| Gas additional charge                            | gr/m      | not requested             |               | 20                        |               | 20                          |               |
| Max. height between units (Outdoor on top)       | m         | 15                        |               | 15                        |               | 15                          |               |
| Max. height between units (Indoor on top)        | m         | 15                        |               | 15                        |               | 15                          |               |
| Net weight Outdoor                               | Kg        | 65                        |               | 65                        |               | 82                          |               |
| Net dimension Outdoor (H./W./D.)                 | mm        | 740x900x320               |               | 740x900x320               |               | 890x900x320                 |               |

The technical data here indicated are in compliance with the European standard EN14511 - Directive 2002/31/EC

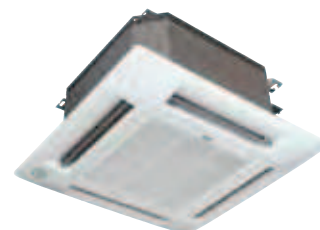
## Indoor units



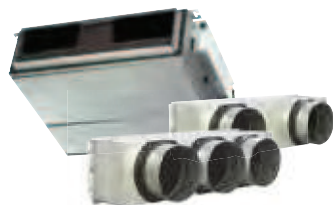
HIGH-WALL  
2.2 - 2.7 - 3.5 kW



HIGH-WALL  
5.2 - 6.8 kW



CASSETTE



DUCTED



FLOOR/CEILING



FLOOR

## Indoor units table

| Hi-wall units |  |         |            |                                      |                   |            |
|---------------|--|---------|------------|--------------------------------------|-------------------|------------|
|               | Air flowrate (h.)<br>(cooling/heating) | Dry     | Fan speeds | Sound pressure (silent-<br>l.-m.-h.) | Dimension (HxWxD) | Net weight |
| AWMI22AHLF    | m <sup>3</sup> /h 440 / 480            | U/h 1,3 | 4 + Auto   | dB(A) 22-27-30-33                    | mm 285x825x189    | kg 10      |
| AWMI27AHLF    | m <sup>3</sup> /h 460 / 480            | U/h 1,6 | 4 + Auto   | dB(A) 22-28-31-34                    | mm 285x825x189    | kg 10      |
| AWMI35AHLF    | m <sup>3</sup> /h 480 / 500            | U/h 2,0 | 4 + Auto   | dB(A) 25-29-33-36                    | mm 285x825x189    | kg 10      |
| AWI52AHLF     | m <sup>3</sup> /h 840 / 880            | U/h 2,3 | 4 + Auto   | dB(A) 28-34-38-41                    | mm 298x1065x234   | kg 12      |
| AWI68AHLF     | m <sup>3</sup> /h 890 / 930            | U/h 2,3 | 4 + Auto   | dB(A) 30-38-41-44                    | mm 298x1065x234   | kg 12      |

| Cassette units     |                               |         |            |                               |                   |            |
|--------------------|-------------------------------|---------|------------|-------------------------------|-------------------|------------|
|                    | Air flowrate (l.-m.-h.)       | Dry     | Fan speeds | Sound pressure (l.-<br>m.-h.) | Dimension (HxWxD) | Net weight |
| ASMI27HG           | m <sup>3</sup> /h 500-600-700 | U/h 1,5 | 3 + Auto   | dB(A) 37-40-44                | mm 296x575x575    | kg 16,5    |
| ASMI35HG           | m <sup>3</sup> /h 500-600-700 | U/h 1,8 | 3 + Auto   | dB(A) 37-40-44                | mm 296x575x575    | kg 16,5    |
| ASI55AHL           | m <sup>3</sup> /h 580-660-790 | U/h 2,0 | 3 + Auto   | dB(A) 37-40-45                | mm 296x575x575    | kg 18,0    |
| ASGMI28HG (grille) | -                             | -       | -          | -                             | mm 41x730x730     | kg 2,5     |

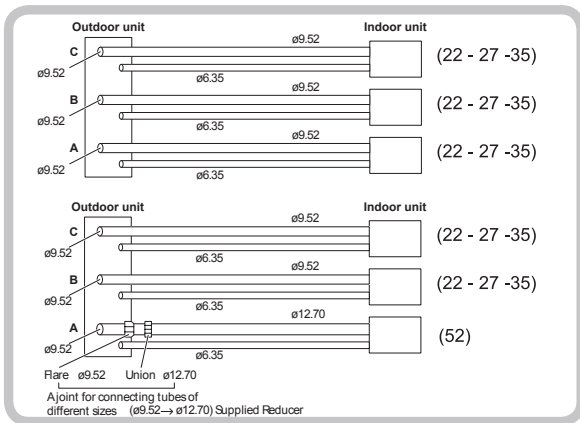
| Ducted units                    |                               |         |            |                               |                   |            |
|---------------------------------|-------------------------------|---------|------------|-------------------------------|-------------------|------------|
|                                 | Air flowrate (l.-m.-h.)       | Dry     | Fan speeds | Sound pressure (l.-m.-<br>h.) | Dimension (HxWxD) | Net weight |
| ADMI27HG                        | m <sup>3</sup> /h 470-560-620 | U/h 1,5 | 3 + Auto   | dB(A) 40-43-45                | mm 266x926x571    | kg 30,0    |
| ADMI35HG                        | m <sup>3</sup> /h 470-560-620 | U/h 1,8 | 3 + Auto   | dB(A) 40-43-45                | mm 266x926x571    | kg 30,0    |
| 2-way duct (200 mm each) Plenum | -                             | -       | -          | -                             | mm 266x926x200    | kg 6,0     |
| ADI55AHL                        | m <sup>3</sup> /h 455-645-865 | U/h 2,0 | 3 + Auto   | dB(A) 33-38-45                | mm 266x1132x571   | kg 35,0    |
| ADI70AHL                        | m <sup>3</sup> /h 530-760-985 | U/h 2,5 | 3 + Auto   | dB(A) 37-40-48                | mm 266x1132x571   | kg 35,0    |
| 3-way duct (200 mm each) Plenum | -                             | -       | -          | -                             | mm 266x1132x200   | kg 7,5     |

| Floor & Floor/ceiling units |                               |         |            |                               |                   |            |
|-----------------------------|-------------------------------|---------|------------|-------------------------------|-------------------|------------|
|                             | Air flowrate (l.-m.-h.)       | Dry     | Fan speeds | Sound pressure (l.-<br>m.-h.) | Dimension (HxWxD) | Net weight |
| AFMI27HG                    | m <sup>3</sup> /h 320-390-425 | U/h 1,6 | 3 + Auto   | dB(A) 34-40-43                | mm 700x560x200    | kg 18,6    |
| FCMI35HG                    | m <sup>3</sup> /h 500-590-700 | U/h 2,0 | 3 + Auto   | dB(A) 38-43-47                | mm 680x900x190    | kg 23,5    |
| FCI55AHL                    | m <sup>3</sup> /h 515-615-720 | U/h 2,8 | 3 + Auto   | dB(A) 39-44-48                | mm 680x900x190    | kg 23,5    |
| FCI70AHL                    | m <sup>3</sup> /h 650-800-900 | U/h 3,4 | 3 + Auto   | dB(A) 44-47-50                | mm 680x900x190    | kg 23,5    |

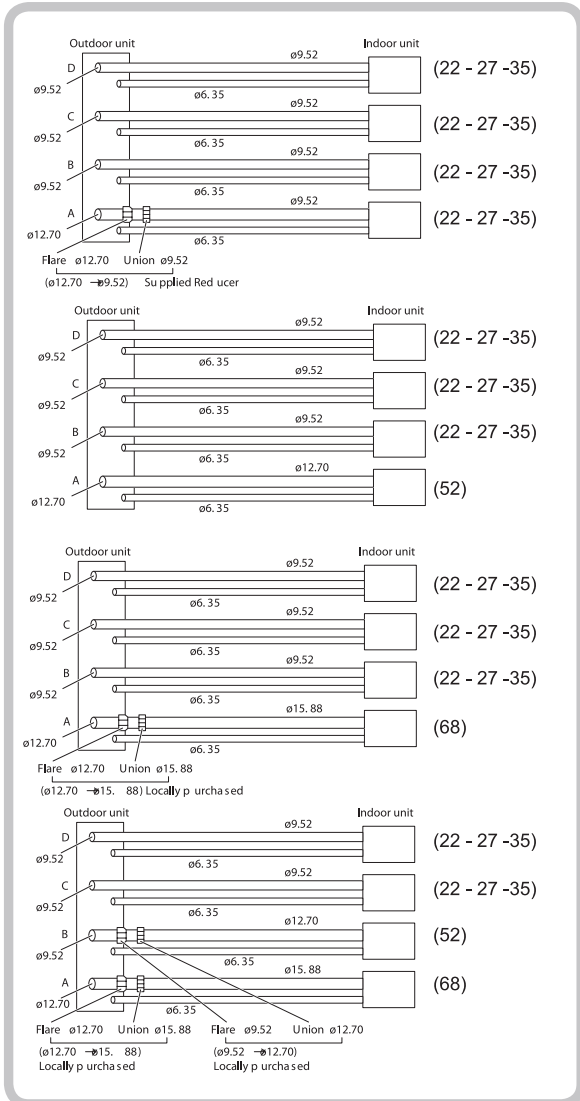
NB: For the indoor units capacity see the matching table.

# Pipe lines tables

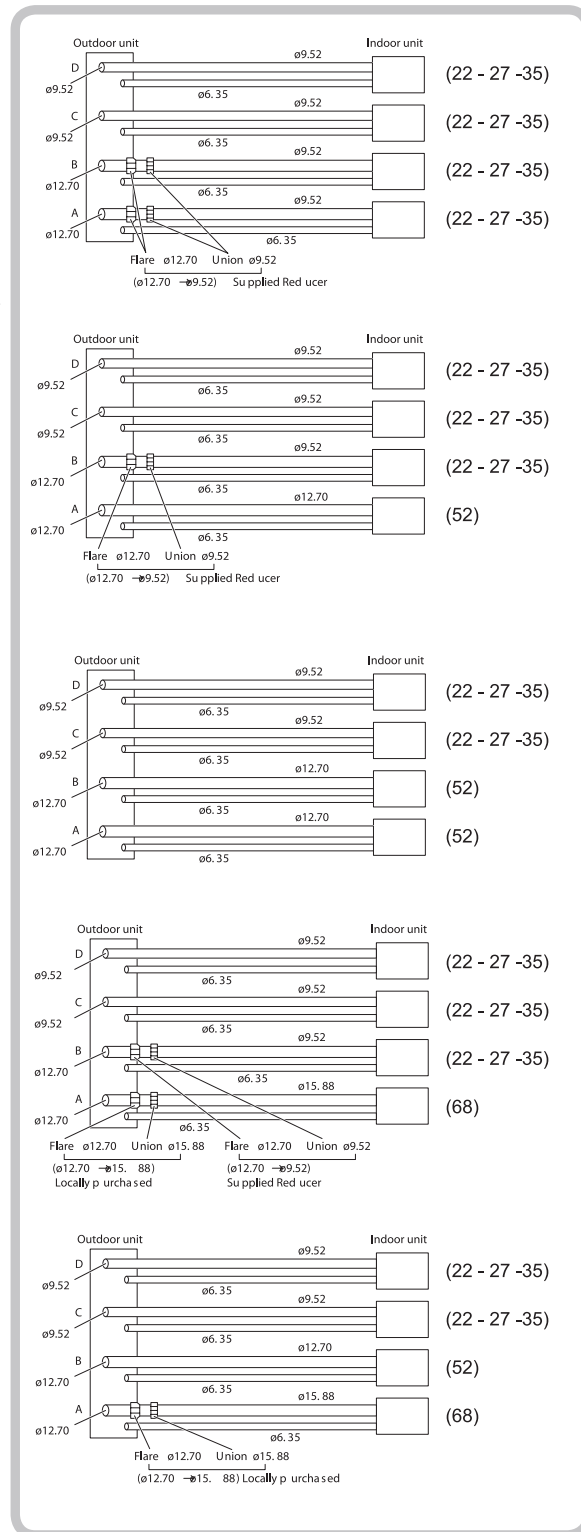
DUAL/TRIAL



TRIAL



QUADRI



SPLIT/PACKAGE DCI

**Note:** Trial outdoor unit allows up to 4 indoor units to be connected. However, only three indoor units can operate simultaneously.

# Indoor Units Matchings

| OUTDOOR UNIT MODEL  |         | AE3MI56AHB                |      |      |                            |                         |                   |                           |      |      |                            |                         |                   |      |
|---|---------|---------------------------|------|------|----------------------------|-------------------------|-------------------|---------------------------|------|------|----------------------------|-------------------------|-------------------|------|
| Performance   |         | Cooling                   |      |      |                            |                         | Heating           |                           |      |      |                            |                         |                   |      |
|   |         | Indoor unit capacity [kW] |      |      | Total capacity [min.-max.] | Power input [min.-max.] | EER               | Indoor unit capacity [kW] |      |      | Total capacity [min.-max.] | Power input [min.-max.] | COP               |      |
|   |         | A                         | B    | C    | kW                         | kW                      |                   | A                         | B    | C    | kW                         | kW                      |                   |      |
| Matchable i.u.<br>22=AWMI22AHL/F<br>27=AWMI27AHL/F<br>35=AWMI35AHL/F<br>52=AWI52AHL/F | 1 unit  | 22                        | 2,20 | -    | -                          | 2,20 [1,4-2,6]          |                   |                           | 2,50 | -    | -                          | 2,50 [1,8-4,3]          |                   |      |
|   |         | 27                        | 2,65 | -    | -                          | 2,65 [1,4-3,2]          |                   |                           | 3,60 | -    | -                          | 3,60 [1,8-4,7]          |                   |      |
|   |         | 35                        | 3,50 | -    | -                          | 3,50 [1,5-3,6]          |                   |                           | 4,20 | -    | -                          | 4,20 [1,9-5,1]          |                   |      |
|   |         | 52                        | 5,15 | -    | -                          | 5,15 [1,6-5,8]          |                   |                           | 6,00 | -    | -                          | 6,00 [2,0-7,8]          |                   |      |
|   | 2 units | 22+22                     | 2,20 | 2,20 | -                          | 4,40 [2,0-5,1]          | 1,28 [0,81-1,80]  | 3,44                      | 2,50 | 2,50 | -                          | 5,00 [2,0-6,4]          | 1,18 [0,75-1,79]  | 4,24 |
|   |         | 22+27                     | 2,20 | 2,65 | -                          | 4,85 [2,0-5,8]          | 1,37 [0,81-1,98]  | 3,54                      | 2,50 | 3,60 | -                          | 6,10 [2,1-7,5]          | 1,57 [0,75-2,32]  | 3,89 |
|   |         | 22+35                     | 1,97 | 3,13 | -                          | 5,10 [2,0-6,7]          | 1,44 [0,81-2,56]  | 3,54                      | 2,40 | 3,90 | -                          | 6,30 [2,1-8,3]          | 1,65 [0,75-2,72]  | 3,82 |
|   |         | 22+52                     | 1,65 | 3,85 | -                          | 5,50 [2,1-6,8]          | 1,55 [0,82-2,26]  | 3,55                      | 2,03 | 4,87 | -                          | 6,90 [2,4-8,4]          | 1,67 [0,68-2,72]  | 4,13 |
|   |         | 27+27                     | 2,50 | 2,50 | -                          | 5,00 [2,0-6,3]          | 1,39 [0,81-2,29]  | 3,60                      | 3,20 | 3,20 | -                          | 6,45 [2,3-8,4]          | 1,68 [0,75-2,72]  | 3,84 |
|   |         | 27+35                     | 2,24 | 2,96 | -                          | 5,20 [2,1-6,8]          | 1,46 [0,81-2,55]  | 3,56                      | 3,07 | 3,58 | -                          | 6,65 [2,3-8,4]          | 1,735 [0,75-2,72] | 3,83 |
|   |         | 27+52                     | 1,90 | 3,70 | -                          | 5,60 [2,1-6,8]          | 1,695 [0,82-2,26] | 3,30                      | 2,74 | 4,56 | -                          | 7,30 [2,4-8,4]          | 1,735 [0,68-2,27] | 4,21 |
|   |         | 35+35                     | 2,20 | 2,70 | -                          | 5,40 [2,0-6,8]          | 1,59 [0,81-2,55]  | 3,40                      | 3,45 | 3,45 | -                          | 6,90 [2,3-8,4]          | 1,82 [0,75-2,72]  | 3,79 |
|   |         | 35+52                     | 2,27 | 3,33 | -                          | 5,60 [2,1-6,8]          | 1,695 [0,82-2,26] | 3,30                      | 3,01 | 4,29 | -                          | 7,30 [2,4-8,4]          | 1,735 [0,68-2,27] | 4,21 |
|   |         | 22+22+22                  | 1,77 | 1,77 | 1,77                       | 5,30 [2,5-9,9]          | 1,34 [0,82-2,38]  | 3,96                      | 2,18 | 2,18 | 2,18                       | 6,55 [2,7-8,4]          | 1,47 [0,68-2,30]  | 4,46 |
|   | 3 units | 22+22+27                  | 1,69 | 1,69 | 2,03                       | 5,40 [2,9-7,0]          | 1,37 [0,82-2,38]  | 3,94                      | 2,02 | 2,02 | 2,91                       | 6,95 [3,0-8,4]          | 1,60 [0,68-2,30]  | 4,34 |
|   |         | 22+22+35                  | 1,56 | 1,56 | 2,48                       | 5,60 [2,9-7,2]          | 1,47 [0,81-2,25]  | 3,81                      | 1,94 | 1,94 | 3,26                       | 7,15 [2,2-8,4]          | 1,62 [0,68-2,30]  | 4,41 |
|   |         | 22+22+52                  | 1,29 | 1,29 | 3,02                       | 5,60 [2,9-7,2]          | 1,48 [0,83-2,38]  | 3,78                      | 1,66 | 1,66 | 3,98                       | 7,30 [3,4-8,4]          | 1,735 [0,68-2,30] | 4,21 |
|   |         | 22+27+27                  | 1,63 | 1,96 | 1,96                       | 5,55 [2,9-7,2]          | 1,36 [0,82-2,38]  | 4,08                      | 1,88 | 2,71 | 2,71                       | 7,30 [3,4-8,4]          | 1,735 [0,68-2,30] | 4,21 |
|   |         | 22+27+35                  | 1,48 | 1,78 | 2,35                       | 5,60 [2,9-7,2]          | 1,55 [0,82-2,25]  | 3,61                      | 1,77 | 2,55 | 2,98                       | 7,30 [3,4-8,4]          | 1,735 [0,68-2,30] | 4,21 |
|   |         | 22+27+52                  | 1,23 | 1,48 | 2,88                       | 5,60 [2,9-7,2]          | 1,55 [0,83-2,38]  | 3,61                      | 1,51 | 2,17 | 3,62                       | 7,30 [3,4-8,4]          | 1,735 [0,68-2,30] | 4,21 |
|   |         | 22+35+35                  | 1,34 | 2,13 | 2,13                       | 5,60 [2,9-7,2]          | 1,55 [0,82-2,38]  | 3,61                      | 1,67 | 2,81 | 2,81                       | 7,30 [3,4-8,4]          | 1,735 [0,68-2,30] | 4,21 |
|   |         | 27+27+27                  | 1,87 | 1,87 | 1,87                       | 5,60 [2,9-7,2]          | 1,55 [0,82-2,38]  | 3,61                      | 2,43 | 2,43 | 2,43                       | 7,30 [3,4-8,4]          | 1,735 [0,68-2,30] | 4,21 |
|   |         | 27+27+35                  | 1,69 | 1,69 | 2,23                       | 5,60 [2,9-7,2]          | 1,55 [0,82-2,38]  | 3,61                      | 2,31 | 2,31 | 2,69                       | 7,30 [3,4-8,4]          | 1,735 [0,68-2,30] | 4,21 |
|   |         | 27+35+35                  | 1,54 | 2,03 | 2,03                       | 5,60 [2,9-7,2]          | 1,55 [0,82-2,38]  | 3,61                      | 2,19 | 2,56 | 2,56                       | 7,30 [3,4-8,4]          | 1,735 [0,68-2,30] | 4,21 |
|   |         | 35+35+35                  | 1,87 | 1,87 | 1,87                       | 5,60 [2,9-7,2]          | 1,55 [0,82-2,38]  | 3,61                      | 2,43 | 2,43 | 2,43                       | 7,30 [3,4-8,4]          | 1,735 [0,68-2,30] | 4,21 |

| OUTDOOR UNIT MODEL  |         | AE3MI68AH/B               |      |                |                            |                         |                  |                           |      |                |                            |                         |                  |      |
|---|---------|---------------------------|------|----------------|----------------------------|-------------------------|------------------|---------------------------|------|----------------|----------------------------|-------------------------|------------------|------|
| Performance   |         | Cooling                   |      |                |                            |                         | Heating          |                           |      |                |                            |                         |                  |      |
|   |         | Indoor unit capacity [kW] |      |                | Total capacity [min.-max.] | Power input [min.-max.] | EER              | Indoor unit capacity [kW] |      |                | Total capacity [min.-max.] | Power input [min.-max.] | COP              |      |
|   |         | A                         | B    | C              | kW                         | kW                      |                  | A                         | B    | C              | kW                         | kW                      |                  |      |
| Matchable i.u.<br>22=AWMI22AHL/F<br>27=AWMI27AHL/F<br>35=AWMI35AHL/F<br>52=AWI52AHL/F | 1 unit  | 22                        | 2,20 | -              | -                          | 2,20 [1,4-2,6]          |                  |                           | 2,50 | -              | -                          | 2,50 [1,8-4,3]          |                  |      |
|   |         | 27                        | 2,65 | -              | -                          | 2,65 [1,4-3,2]          |                  |                           | 3,60 | -              | -                          | 3,60 [1,8-4,7]          |                  |      |
|   |         | 35                        | 3,50 | -              | -                          | 3,50 [1,5-3,6]          |                  |                           | 4,20 | -              | -                          | 4,20 [1,9-5,1]          |                  |      |
|   |         | 52                        | 5,15 | -              | -                          | 5,15 [1,6-5,8]          |                  |                           | 6,00 | -              | -                          | 6,00 [2,0-7,8]          |                  |      |
|   |         | 68                        | 6,80 | -              | -                          | 6,80 [1,6-6,8]          |                  |                           | 8,00 | -              | -                          | 8,00 [2,0-8,0]          |                  |      |
|   |         | 22+22                     | 2,20 | 2,20           | -                          | 4,40 [2,0-5,1]          |                  |                           | 2,50 | 2,50           | -                          | 5,00 [2,0-6,4]          |                  |      |
|   | 2 units | 22+27                     | 2,20 | 2,50           | -                          | 4,85 [2,0-5,8]          |                  |                           | 2,50 | 3,60           | -                          | 6,10 [2,1-7,5]          |                  |      |
|   |         | 22+35                     | 2,20 | 3,50           | -                          | 5,70 [2,0-6,7]          |                  |                           | 2,50 | 4,20           | -                          | 6,70 [2,1-8,3]          |                  |      |
|   |         | 22+52                     | 1,98 | 4,62           | -                          | 6,60 [2,1-7,7]          |                  |                           | 2,44 | 5,86           | -                          | 8,30 [2,4-9,0]          |                  |      |
|   |         | 22+68                     | 1,61 | 5,19           | -                          | 6,80 [2,1-8,1]          |                  |                           | 1,95 | 6,65           | -                          | 8,60 [2,4-9,0]          |                  |      |
|   |         | 27+27                     | 2,65 | 2,65           | -                          | 5,30 [2,0-6,3]          |                  |                           | 3,60 | 3,60           | -                          | 7,20 [2,3-8,5]          |                  |      |
|   |         | 27+35                     | 2,54 | 2,54           | -                          | 5,90 [2,0-6,8]          |                  |                           | 3,51 | 4,09           | -                          | 7,60 [2,3-8,5]          |                  |      |
|   |         | 27+52                     | 2,28 | 4,42           | -                          | 6,70 [2,1-8,1]          |                  |                           | 3,15 | 5,25           | -                          | 8,40 [2,4-9,0]          |                  |      |
|   |         | 27+68                     | 1,85 | 4,95           | -                          | 6,80 [2,1-8,1]          |                  |                           | 2,56 | 6,04           | -                          | 8,60 [2,4-9,0]          |                  |      |
|   |         | 35+35                     | 3,30 | 3,30           | -                          | 6,60 [2,0-8,1]          |                  |                           | 4,00 | 4,00           | -                          | 8,00 [2,3-8,5]          |                  |      |
|   |         | 35+52                     | 2,75 | 4,05           | -                          | 6,80 [2,1-8,1]          |                  |                           | 3,50 | 5,00           | -                          | 8,50 [2,4-9,0]          |                  |      |
|   | 3 units | 22+22+22                  | 2,20 | 2,20           | 2,20                       | 6,50 [2,5-7,7]          | 2,00 [0,82-2,57] | 3,25                      | 2,50 | 2,50           | 2,50                       | 7,50 [2,7-8,5]          | 1,78 [0,68-2,3]  | 4,21 |
|   |         | 22+22+27                  | 2,06 | 2,06           | 2,48                       | 6,60 [2,9-8,1]          | 2,00 [0,82-2,6]  | 3,30                      | 2,30 | 2,30           | 2,30                       | 8,00 [3,0-9,0]          | 1,87 [0,68-2,46] | 4,28 |
|   |         | 22+22+35                  | 1,88 | 1,88           | 2,99                       | 6,75 [2,9-8,1]          | 2,00 [0,82-2,6]  | 3,38                      | 2,26 | 2,26           | 3,79                       | 8,30 [3,2-9,0]          | 2,00 [0,68-2,46] | 4,15 |
|   |         | 22+22+52                  | 1,57 | 1,57           | 3,67                       | 6,80 [2,9-8,1]          | 2,00 [0,83-2,6]  | 3,40                      | 1,95 | 1,95           | 4,69                       | 8,60 [3,4-9,0]          | 2,00 [0,69-2,46] | 4,30 |
|   |         | 22+27+27                  | 1,97 | 2,40           | 2,40                       | 6,70 [2,9-8,1]          | 2,00 [0,82-2,6]  | 3,35                      | 2,16 | 3,12           | 3,12                       | 8,40 [3,4-9,0]          | 2,00 [0,68-2,46] | 4,20 |
|   |         | 22+27+35                  | 1,79 | 2,16           | 2,85                       | 6,80 [2,9-8,1]          | 2,00 [0,82-2,6]  | 3,40                      | 2,06 | 2,97           | 3,47                       | 8,50 [3,4-9,0]          | 2,00 [0,68-2,46] | 4,25 |
|   |         | 22+27+52                  | 1,50 | 1,80           | 3,50                       | 6,80 [2,9-8,1]          | 2,00 [0,83-2,6]  | 3,40                      | 1,78 | 2,56           | 4,26                       | 8,60 [3,4-9,0]          | 2,00 [0,69-2,46] | 4,30 |
|   |         | 22+35+35                  | 1,63 | 2,59           | 2,59                       | 6,80 [2,9-8,1]          | 2,00 [0,82-2,6]  | 3,40                      | 1,97 | 3,31           | 3,31                       | 8,60 [3,4-9,0]          | 2,00 [0,68-2,46] | 4,30 |
|   |         | 22+35+52                  | 1,38 | 2,19           | 3,23                       | 6,80 [2,9-8,1]          | 2,00 [0,83-2,6]  | 3,40                      | 1,69 | 2,84           | 4,06                       | 8,60 [3,4-9,0]          | 2,00 [0,69-2,46] | 4,30 |
|   |         | 27+27+27                  | 2,27 | 2,27           | 2,27                       | 6,80 [2,9-8,1]          | 2,00 [0,82-2,6]  | 3,40                      | 2,87 | 2,87           | 2,87                       | 8,60 [3,4-9,0]          | 2,00 [0,68-2,46] | 4,30 |
|   |         | 27+27+35                  | 2,05 | 2,05           | 2,70                       | 6,80 [2,9-8,1]          | 2,00 [0,82-2,6]  | 3,40                      | 2,72 | 2,72           | 3,17                       | 8,60 [3,4-9,0]          | 2,00 [0,68-2,46] | 4,30 |
|   |         | 27+27+52                  | 1,72 | 1,72           | 3,35                       | 6,80 [2,9-8,1]          | 2,00 [0,83-2,6]  | 3,40                      | 2,35 | 3,91           | 3,91                       | 8,60 [3,4-9,0]          | 2,00 [0,69-2,46] | 4,30 |
|   |         | 27+35+35                  | 1,87 | 2,47           | 2,47                       | 6,80 [2,9-8,1]          | 2,00 [0,82-2,6]  | 3,40                      | 2,58 | 3,01           | 3,01                       | 8,60 [3,4-9,0]          | 2,00 [0,68-2,46] | 4,30 |
|   |         | 27+35+52                  | 1,59 | 2,11           | 3,10                       | 6,80 [2,9-8,1]          | 2,00 [0,83-2,6]  | 3,40                      | 2,24 | 3,74           | 3,74                       | 8,60 [3,4-9,0]          | 2,00 [0,68-2,46] | 4,30 |
| 35+35+35  | 2,27    | 2,27                      | 2,27 | 6,80 [2,9-8,1] | 2,00 [0,82-2,6]            | 3,40                    | 2,87             | 2,87                      | 2,87 | 8,60 [3,4-9,0] | 2,00 [0,68-2,46]           | 4,30                    |                  |      |
| 35+35+52  | 1,96    | 1,96                      | 2,88 | 6,80 [2,9-8,1] | 2,00 [0,83-2,6]            | 3,40                    | 2,51             | 2,51                      | 3,58 | 8,60 [3,4-9,0] | 2,00 [0,69-2,46]           | 4,30                    |                  |      |